



Baker Atlas

FILE NO:	COMPANY	VULCAN MINERALS INC.
API NO:	WELL	VULCAN INVESTCAN RED BROOK #2
	FIELD	BAY ST.GEORGE BASIN
	PROVINCE	NEWFOUNDLAND AND LABRADOR
Ver. 3.87	LOCATION:	OTHER SERVICES
UID:		ZDL-CN-GR-XYCAL
N/A		XMAC-GR-CAL, CYL
LICENSE:		DLL-GR
ADW 2009-116-03-	BH LOC. LSD:	
	LAT 48.2679591667	LONG -58.7501141667
PERMANENT DATUM	G.L.	ELEVATION
LOG MEASURED FROM	K.B.	6.3 M
DRILL MEAS. FROM	KELLY BUSHING	ABOVE P.D.
		ELEVATIONS:
		KB 61.8 M
		DF
		GL 55.5 M

DATE	RUN	TRIP	1	1
SERVICE ORDER			CA206497	
DEPTH DRILLER			889.0 M	
DEPTH LOGGER			888.2 M	
BOTTOM LOGGED INTERVAL			874.6 M	
TOP LOGGED INTERVAL			220.2 M	
CASING DRILLER			339.7 MM	220.2 M
CASING LOGGER			220.2 M	
BIT SIZE			311.0 MM	
TYPE OF FLUID IN HOLE			BRINE	
DENSITY		VISCOSITY	1240.0 G/L	69.0 S
PH		FLUID LOSS	10.8	18.4 ML
SOURCE OF SAMPLE		TOOL MEASURED		
RM AT MEAS. TEMP.			0.07 OHMM	21.0 DEGC
RMF AT MEAS. TEMP.			0.06 OHMM	21.0 DEGC
RMC AT MEAS. TEMP.			0.08 OHMM	21.0 DEGC
SOURCE OF RMF		RMC	CALCULATED	CALCULATED
RM AT BHT			0.07 OHMM	19.9 DEGC
TIME SINCE CIRCULATION			7.0 HOURS	
MAX. RECORDED TEMP.			20.1 DEGC	
EQUIP. NO.		LOCATION	4126	OH SARNIA
RECORDED BY			D.SHKOLNIKOV	
WITNESSED BY			M.SMITH	

IN MAKING INTERPRETATIONS OF LOGS OUR EMPLOYEES WILL GIVE CUSTOMER THE BENEFIT OF THEIR BEST JUDGEMENT. BUT SINCE ALL INTERPRETATIONS ARE OPINIONS BASED ON INFERENCES FROM ELECTRICAL OR OTHER MEASUREMENTS, WE CANNOT, AND WE DO NOT GUARANTEE THE ACCURACY OR CORRECTNESS OF ANY INTERPRETATION. WE SHALL NOT BE LIABLE OR RESPONSIBLE FOR ANY LOSS, COST, DAMAGES, OR EXPENSES WHATSOEVER INCURRED OR SUSTAINED BY THE CUSTOMER RESULTING FROM ANY INTERPRETATION MADE BY ANY OF OUR EMPLOYEES.

BOREHOLE RECORD

BIT SIZE	FROM	TO
444.5 MM	0.0 M	220.2 M
311.0 MM	220.2 M	889.0 M

CASING RECORD

SIZE	WEIGHT	GRADE	FROM	TO
339.7 MM	71.4 KG/M	J-55	0.0 M	220.2 M

REMARKS

RUN 1 TRIP 1 : TIME STOPPED CIRCULATION: 09-NOV-2009 08:10 PM
RIG: STONEHAM #11
CREW: D.SHKOLNIKOV, D.KIRWAN, S.ZEMAN

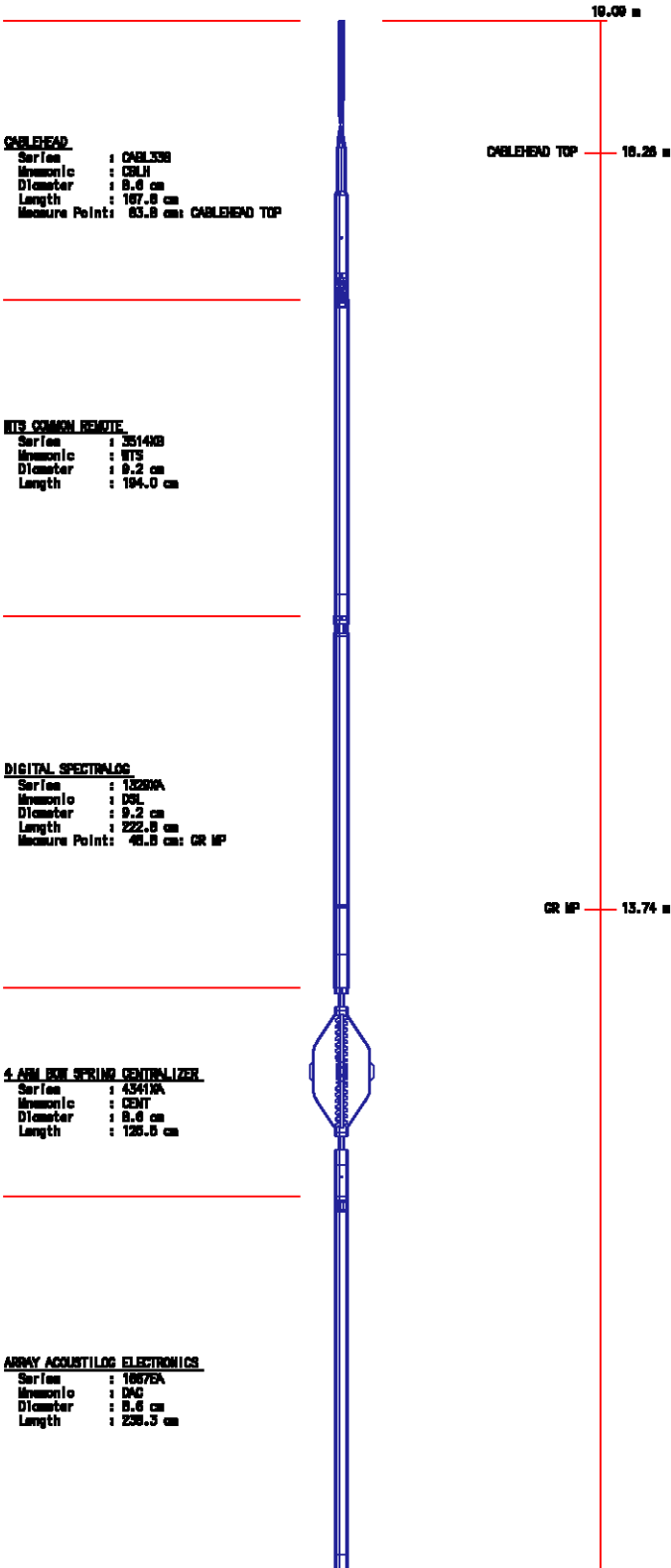
EQUIPMENT DATA

RUN	TRIP	TOOL	SERIES NO.	SERIAL NO.	POSITION
1	1	COMM	3514XA	117396	FREE
1	1	WTS DGR/SLI	1329XA	153116	FREE
1	1	CENTRALIZER	4341XA	369754	FREE
1	1	A/L ELECONS	1667EA	121977	CENTRALIZED
1	1	XMAC BY MDR	1678MA	180304	CENTRALIZED

1	1	AMAC RA MDR	1678MA	169391	CENTRALIZED
1	1	MAC ACOU IS	1668PA	172683	FREE
1	1	MAC TRANSMI	1668BA	188362	CENTRALIZED
1	1	MAC XMTR EL	1668FA	154044	CENTRALIZED
1	1	CENTRALIZER	4341XA	178358	FREE

INSTRUMENT CONFIGURATION

Source File: /dat1a/pass/vul_rb2/k740d~-tdg



CROSS MULTIPOLE ARMY ACQUITTILLO

Series : 1678BA
Harmonic : 104C
Diameter : 9.8 cm
Length : 332.4 cm
Measure Point: 187.8 cm: R6
Measure Point: 182.4 cm: R7
Measure Point: 157.2 cm: R8
Measure Point: 121.9 cm: R9
Measure Point: 108.7 cm: R4
Measure Point: 91.4 cm: R3
Measure Point: 78.2 cm: R2
Measure Point: 61.0 cm: R1

R8 : 7.08 m
R7 : 7.81 m
R6 : 7.66 m
R5 : 7.51 m
R4 : 7.35 m
R3 : 7.20 m
R2 : 7.05 m
R1 : 6.90 m

MULTI-POLE ARMY ACQUITTILLO

Series : 1688FA
Harmonic : 104C
Diameter : 9.2 cm
Length : 182.4 cm

MULTI-POLE ARMY ACQUITTILLO

Series : 1688FA
Harmonic : 104C
Diameter : 9.2 cm
Length : 210.8 cm
Measure Point: 165.1 cm: MONOPOLE T2 MP
Measure Point: 142.2 cm: DIPOLE T4 MP
Measure Point: 111.8 cm: DIPOLE T3 MP
Measure Point: 86.9 cm: MONOPOLE T1 MP

MONOPOLE T2 MP : 4.31 m
DIPOLE T4 MP : 4.08 m
DIPOLE T3 MP : 3.77 m
MONOPOLE T1 MP : 3.65 m

MULTI-POLE ARMY ACQUITTILLO

Series : 1688FA
Harmonic : 104C
Diameter : 8.6 cm
Length : 131.6 cm

4 ARM BOW SPRING CENTRALIZER

Series : 4341XA
Harmonic : CENT
Diameter : 8.6 cm
Length : 126.0 cm

BALL PLUG 3/8

TOTAL LENGTH: 10.00 m
TOTAL WEIGHT: 484.5 kg
MAX DIAMETER: 9.8 cm

0.00 m

MAIN LOG

PARAMETER AND FILTER SUMMARY REPORT

FILE: /data/pass/vul_rb2/k740d02.prm

LOGGING MODE: DEPTH DIRECTION: UP

TOP DEPTH: 181.889 m BOTTOM DEPTH: 890.827 m

SYMMETRIC FILTER				
MEASUREMENT TYPE	PARAMETER	VALUE	UNITS	INTERVAL (m)
TENSION	FILTER ()	medium (1)		TOP BOTTOM
GR	FILTER ()	medium (1)		" "
SL-II	FILTER	medium (1)		" "

SLII PROCESSING				
MEASUREMENT TYPE	PARAMETER	VALUE	UNITS	INTERVAL (m)
E MATRIX	OPEN/CASED HOLE	OPEN HOLE		TOP BOTTOM
SLII AUTO GAIN	AUTO GAIN	AUTO GAIN ON		" "
SLII ENERGY RANGE	ENERGY RANGE	1.30-3.00 MeV		" "
SPECTRUM CALIBRATION	MODE	AUTOMATIC		" "

CURVE DESCRIPTION REPORT			
CURVE NAME	CURVE ALIAS	CREATION DATE	CURVE DESCRIPTION
F1:GR	GR	Nov 10 03:05:18 2009	GAMMA RAY
F1:GRSL	GRSL	Nov 10 03:05:18 2009	GAMMA RAY FROM 1329 SPECTRUM
F1:K	K	Nov 10 03:05:18 2009	POTASSIUM CONTENT
F1:KTH	KTH	Nov 10 03:05:18 2009	STRIPPED POTASSIUM-THORIUM
F1:MMRK	MMRK	Nov 10 03:05:18 2009	MINUTE MARK
F1:QCAL	QCAL	Nov 10 03:05:18 2009	QUALITY CURVE
F1:TEN	TEN	Nov 10 03:05:18 2009	DIFFERENTIAL TENSION
F1:TH	TH	Nov 10 03:05:18 2009	THORIUM CONCENTRATION
F1:U	U	Nov 10 03:05:18 2009	URANIUM CONTENT

CURVE MEASURE POINT OFFSET							
CURVE	OFFSET (m)	CURVE	OFFSET (m)	CURVE	OFFSET (m)	CURVE	OFFSET (m)
GR	13.64	K	13.64	QCAL	13.64	TH	13.64
GRSL	13.64	KTH	13.64	TEN	0.00	U	13.64

Presentation : cpu1:/data/pass/vul_rb2/isl_main.pdf [1:240 Scale]

Plot Interval : 199.949 - 891.235 Meters

Data File 1 : F1 : cpu1:/data/pass/vul_rb2/311_main.xtf

Created On : Nov 10 03:05:18 2009

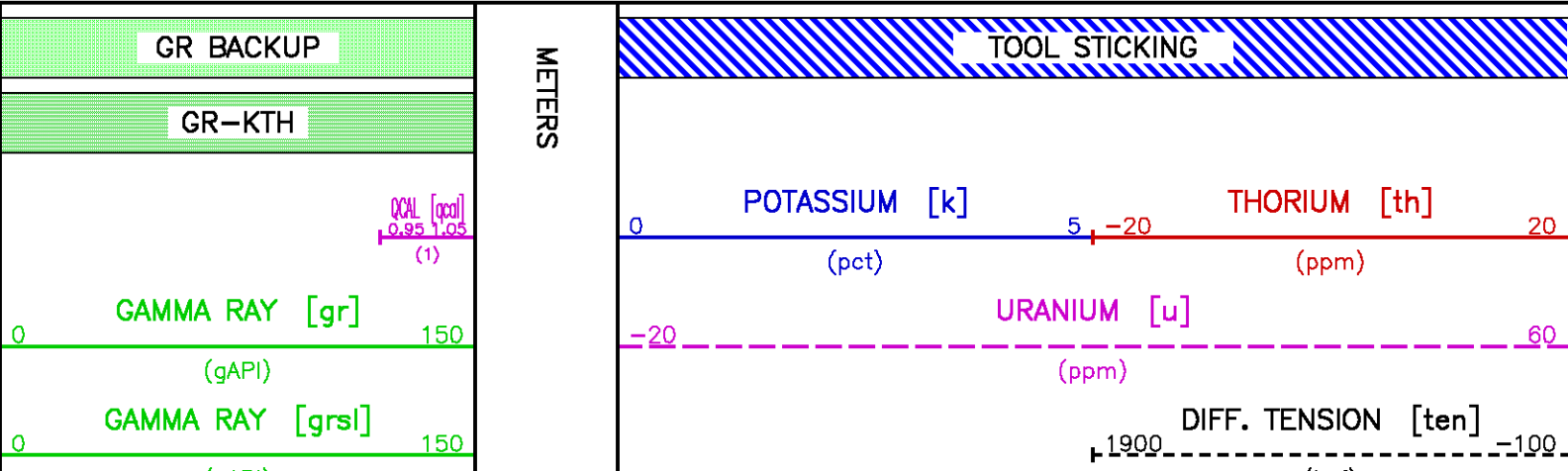
Company : VULCAN MINERALS

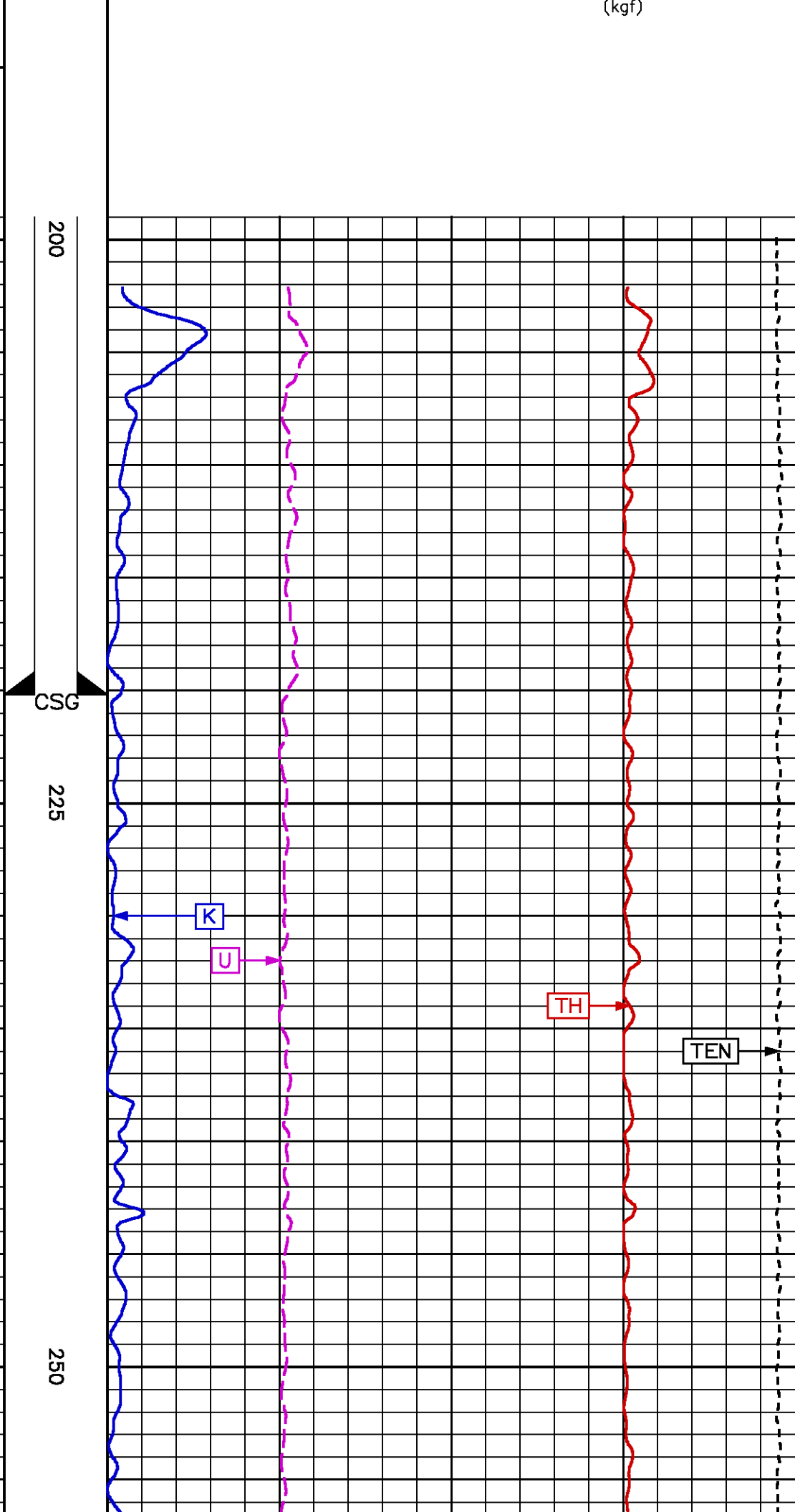
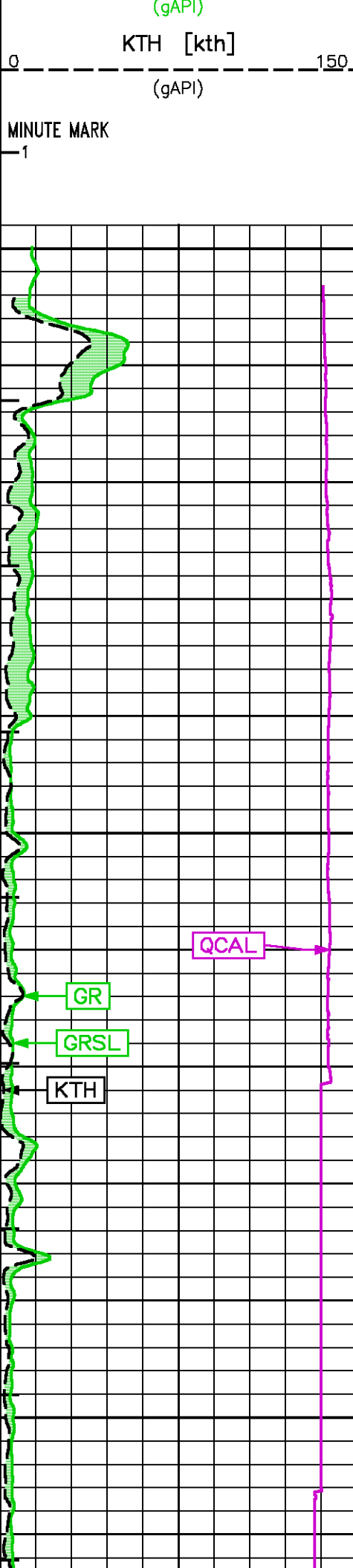
Well : VULCAN INVESTCAN RED BROOK #2

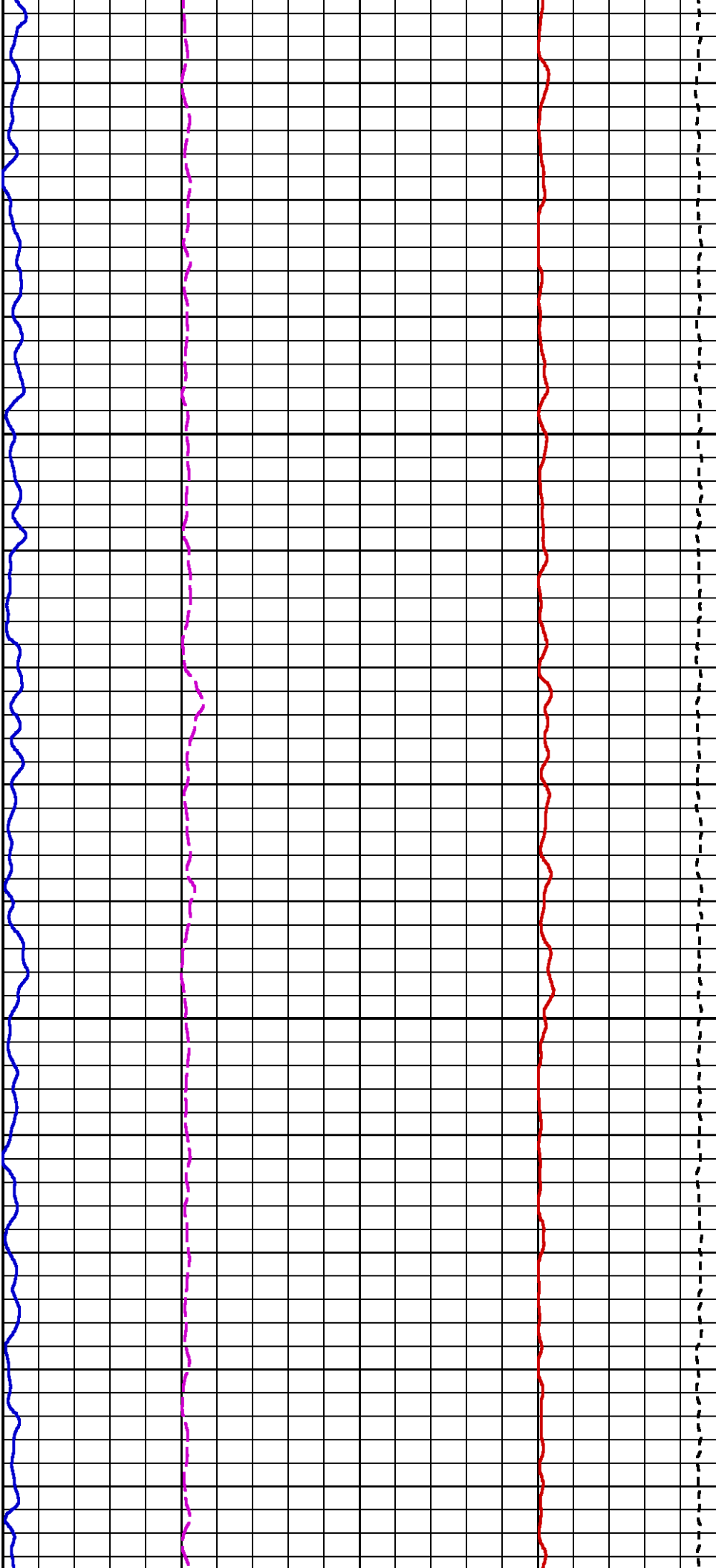
Field : BAY ST. GEORGE BASIN

File Interval : 199.949 - 891.311 Meters

Oct : k740d

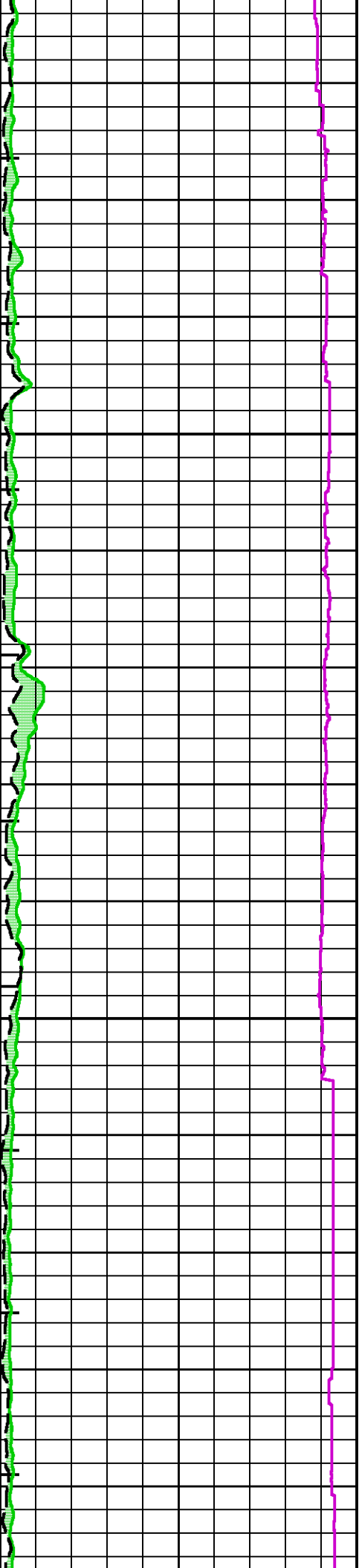


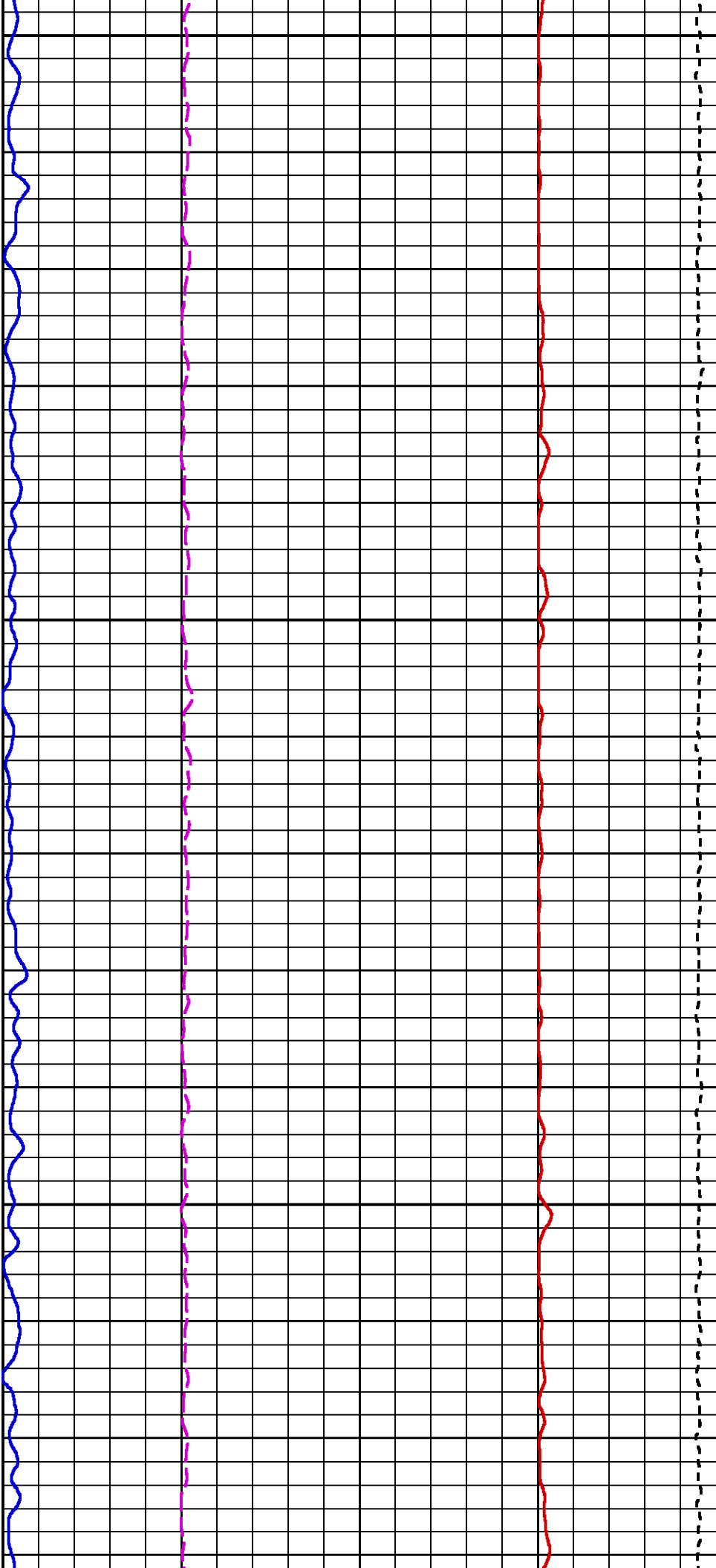




275

300

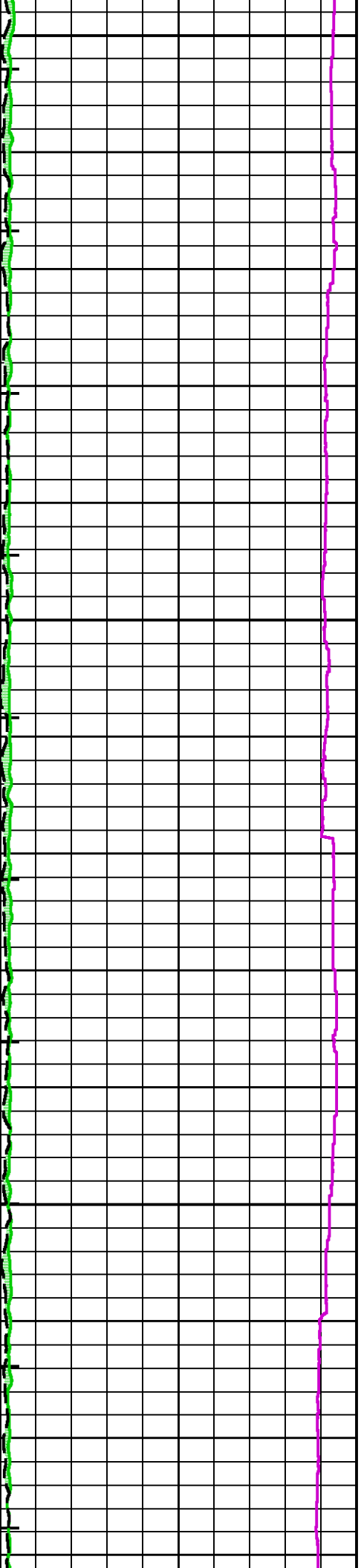


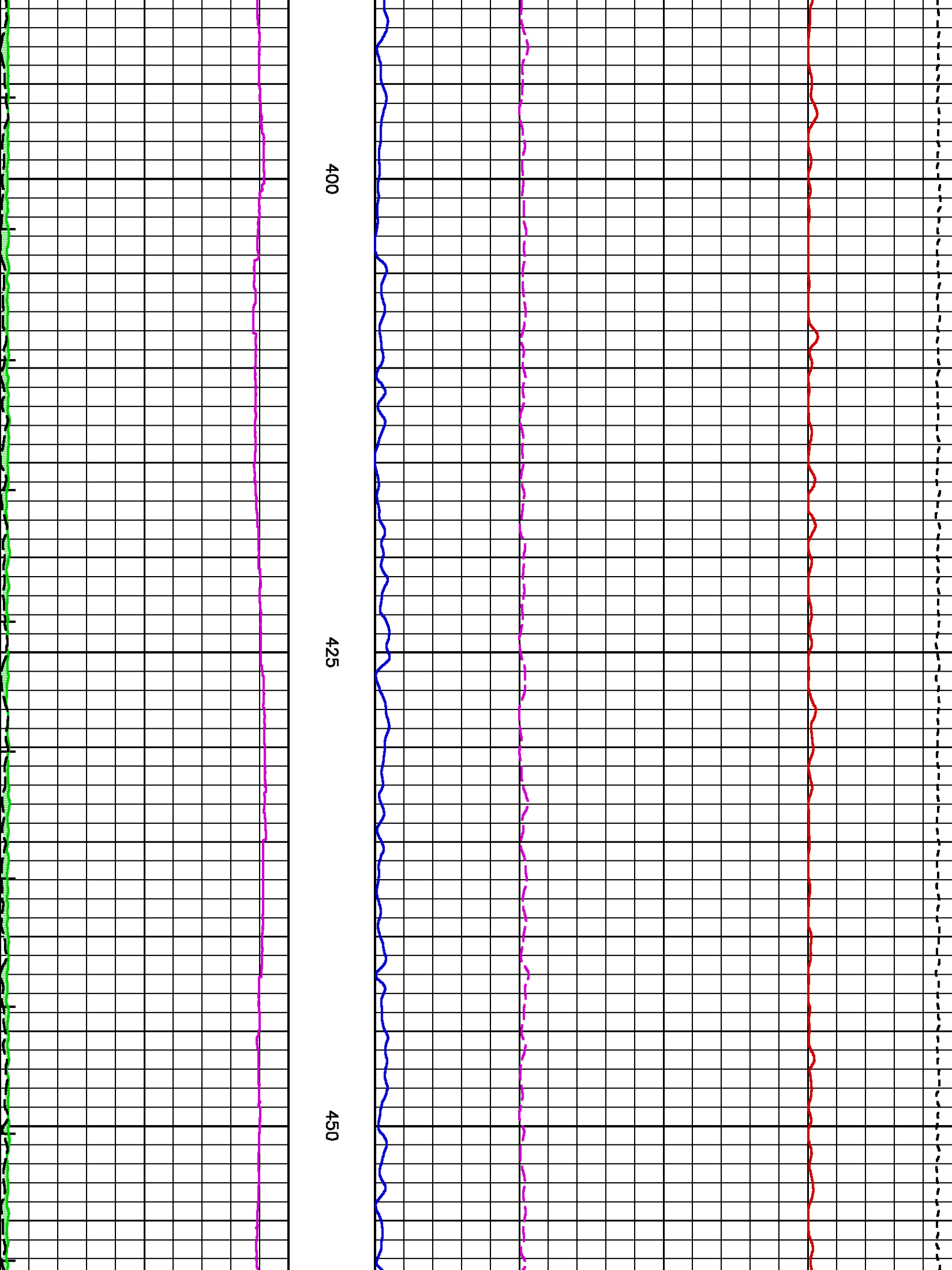


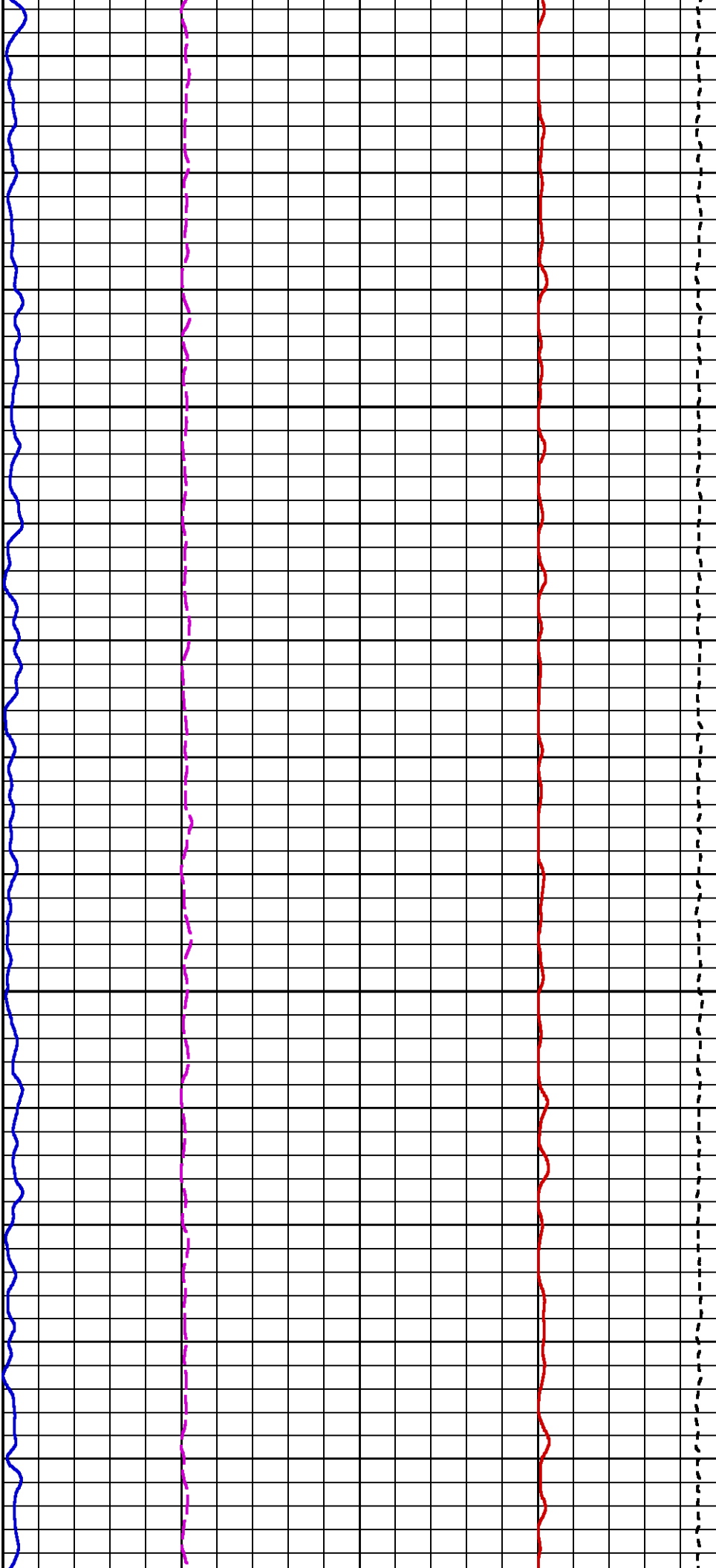
325

350

375



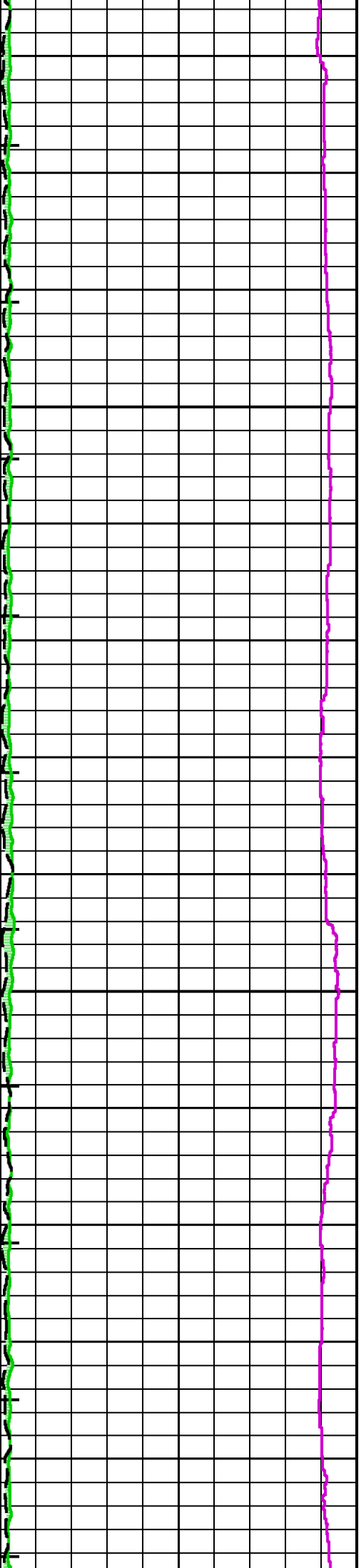


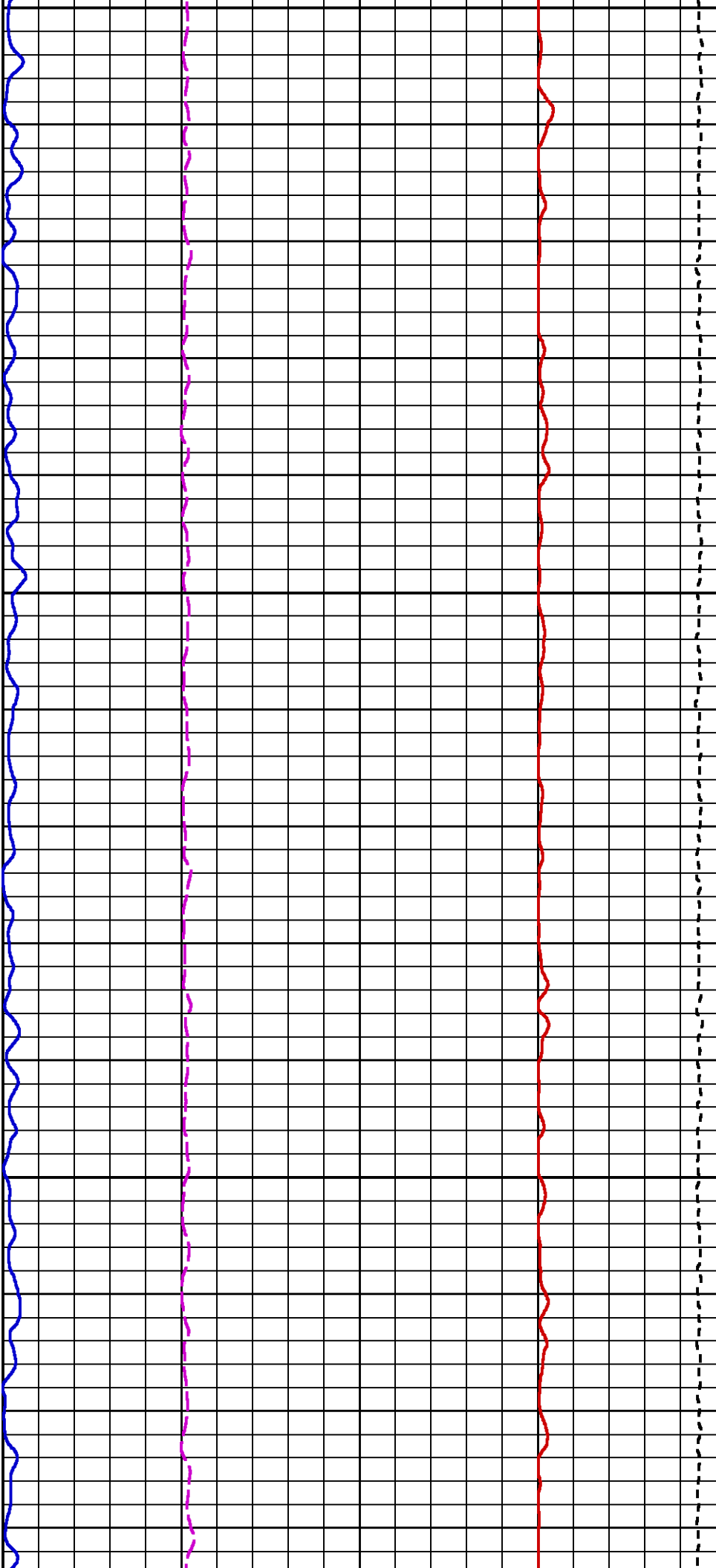


475

500

5

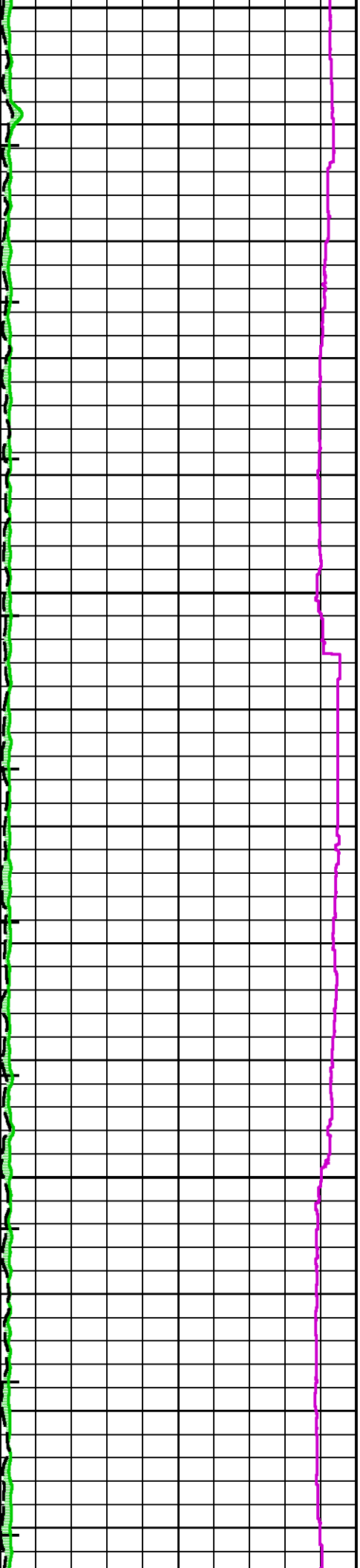


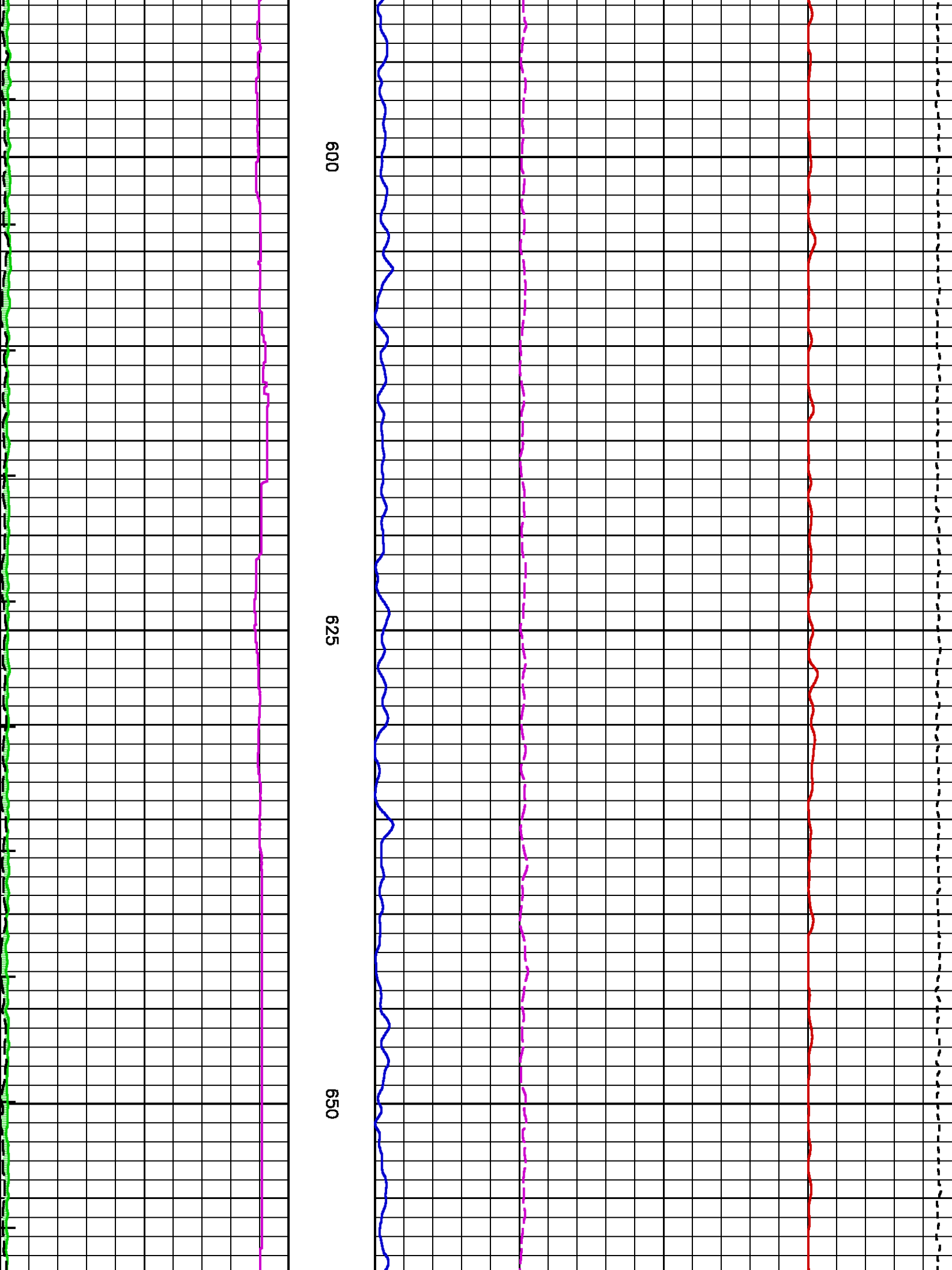


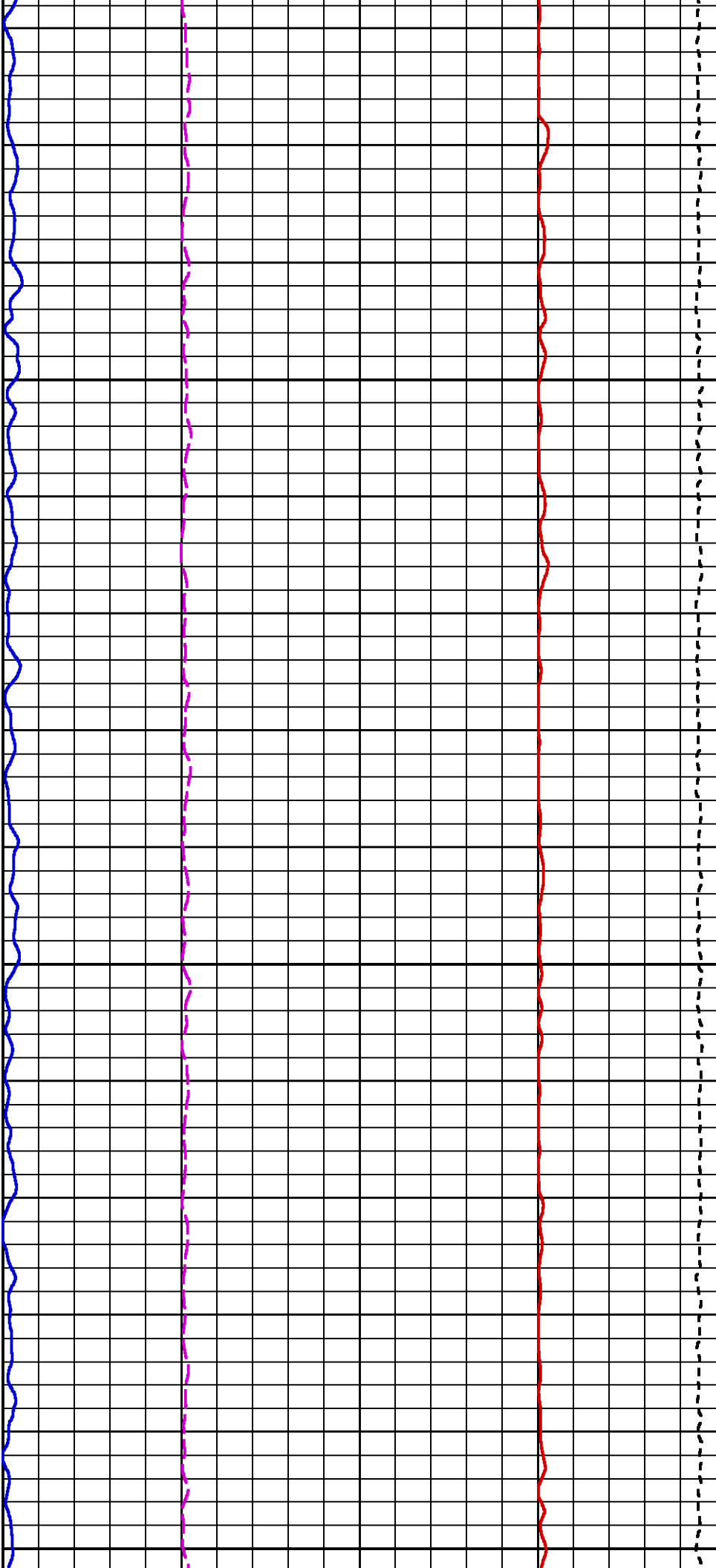
25

550

575



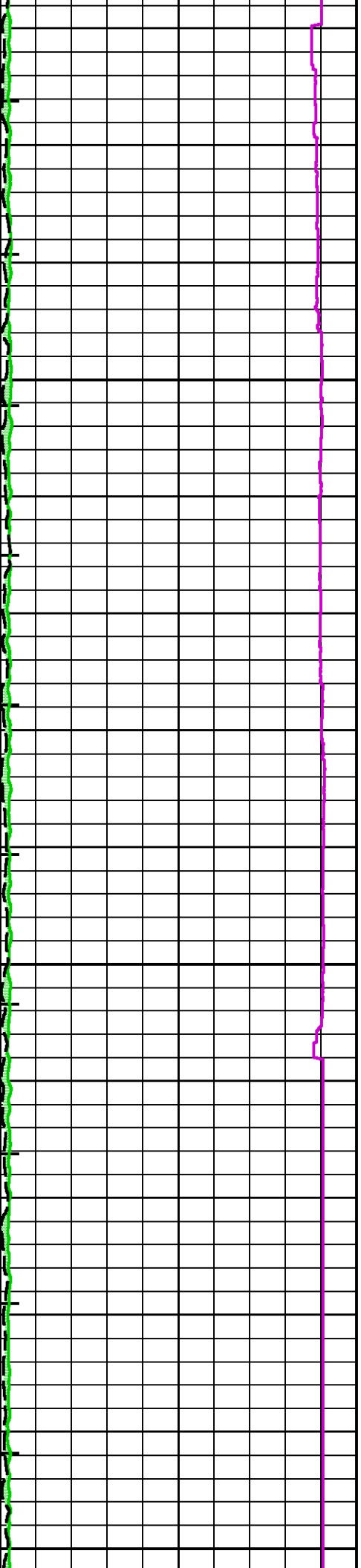


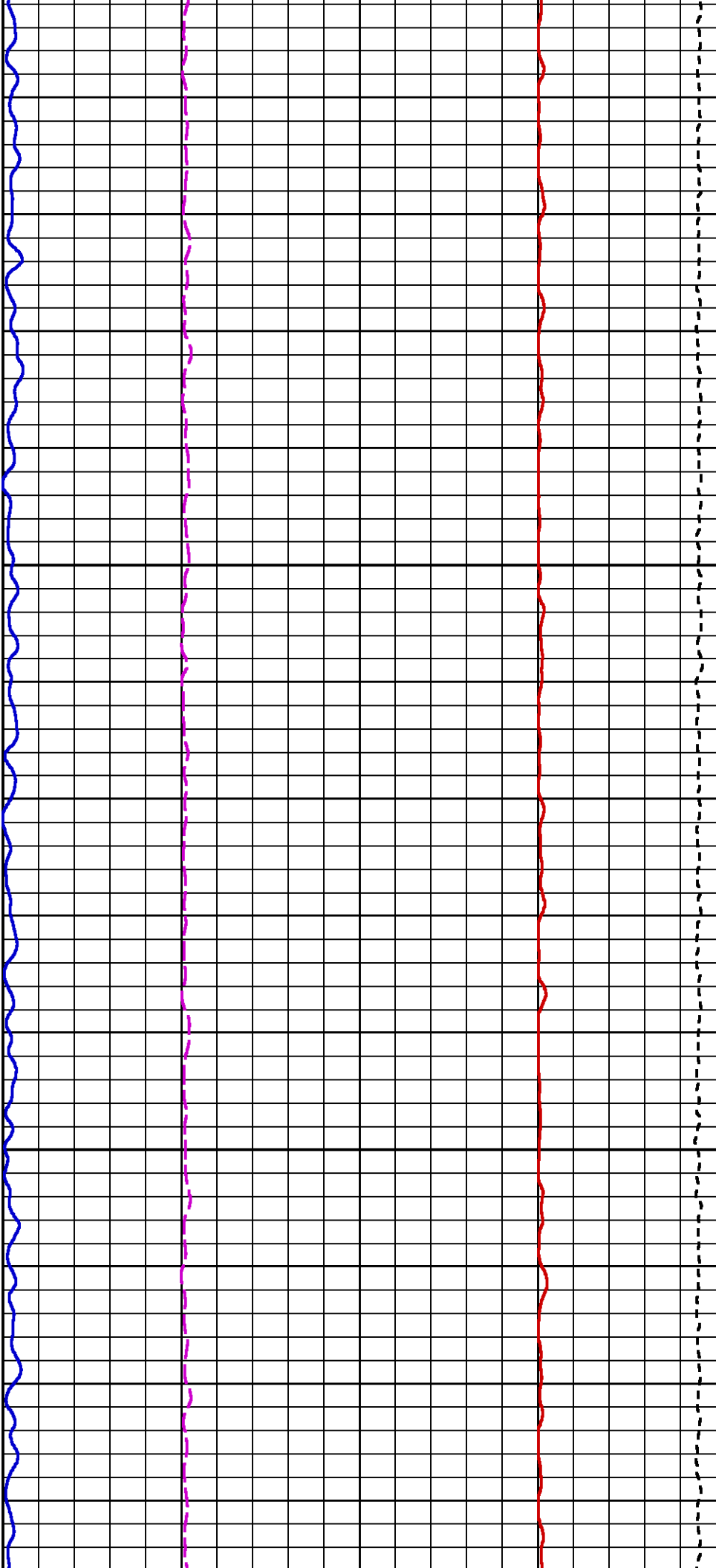


675

700

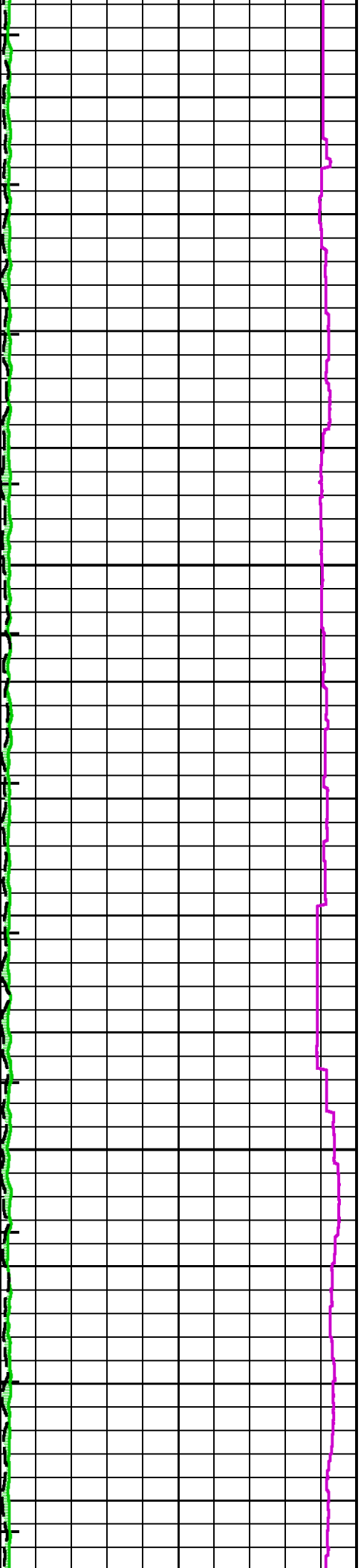
725

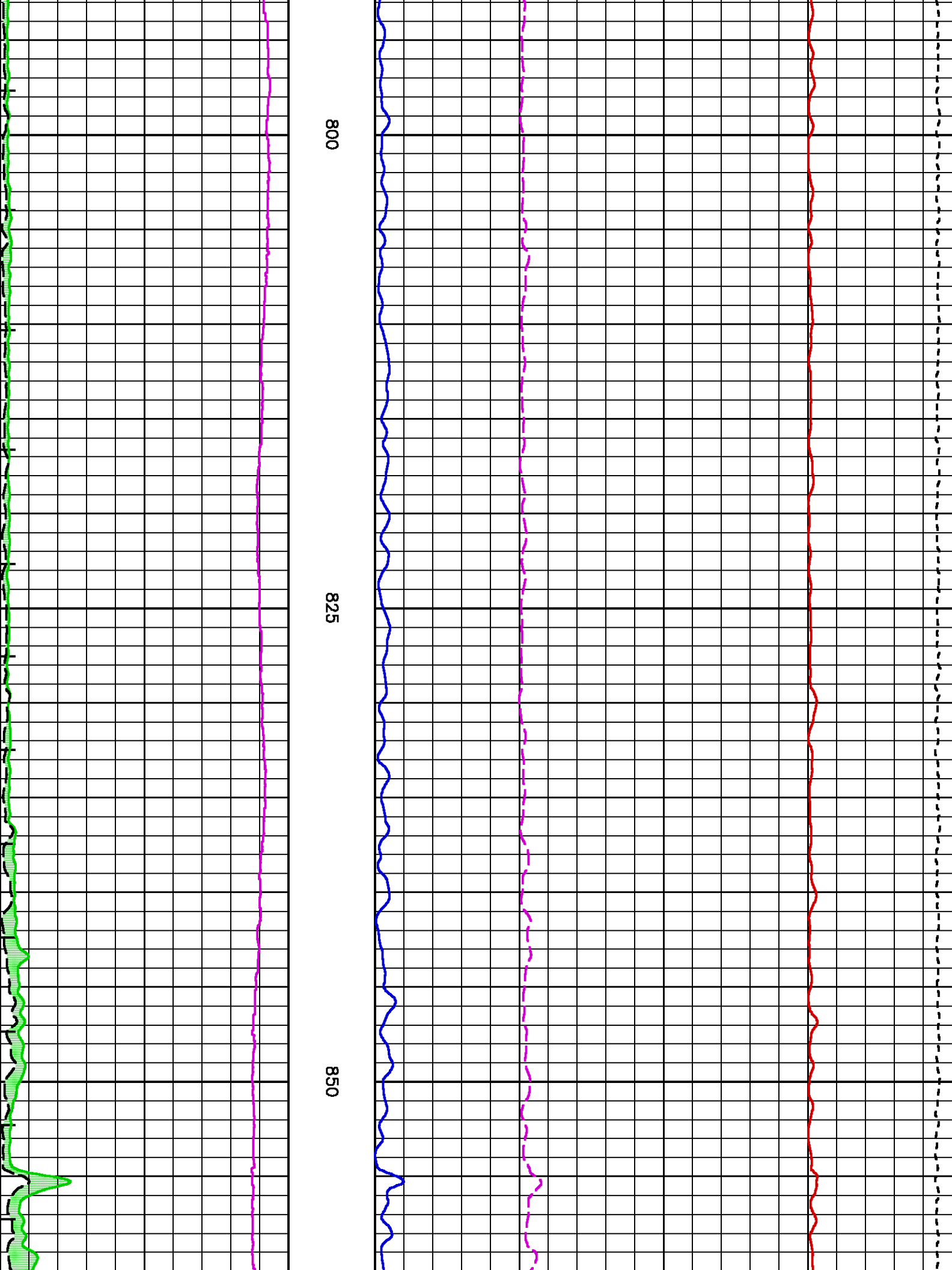


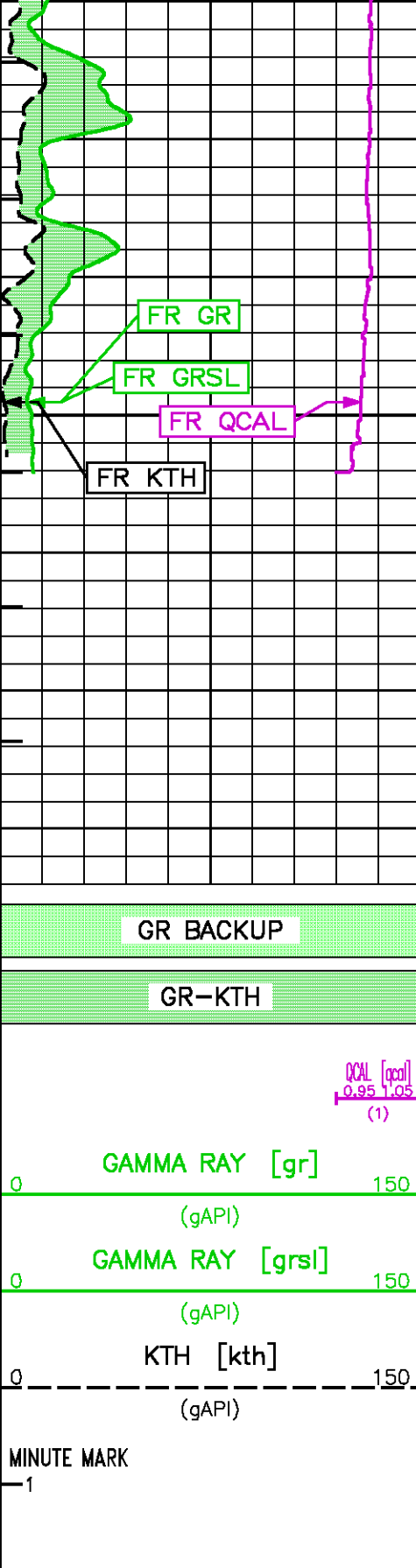


750

775



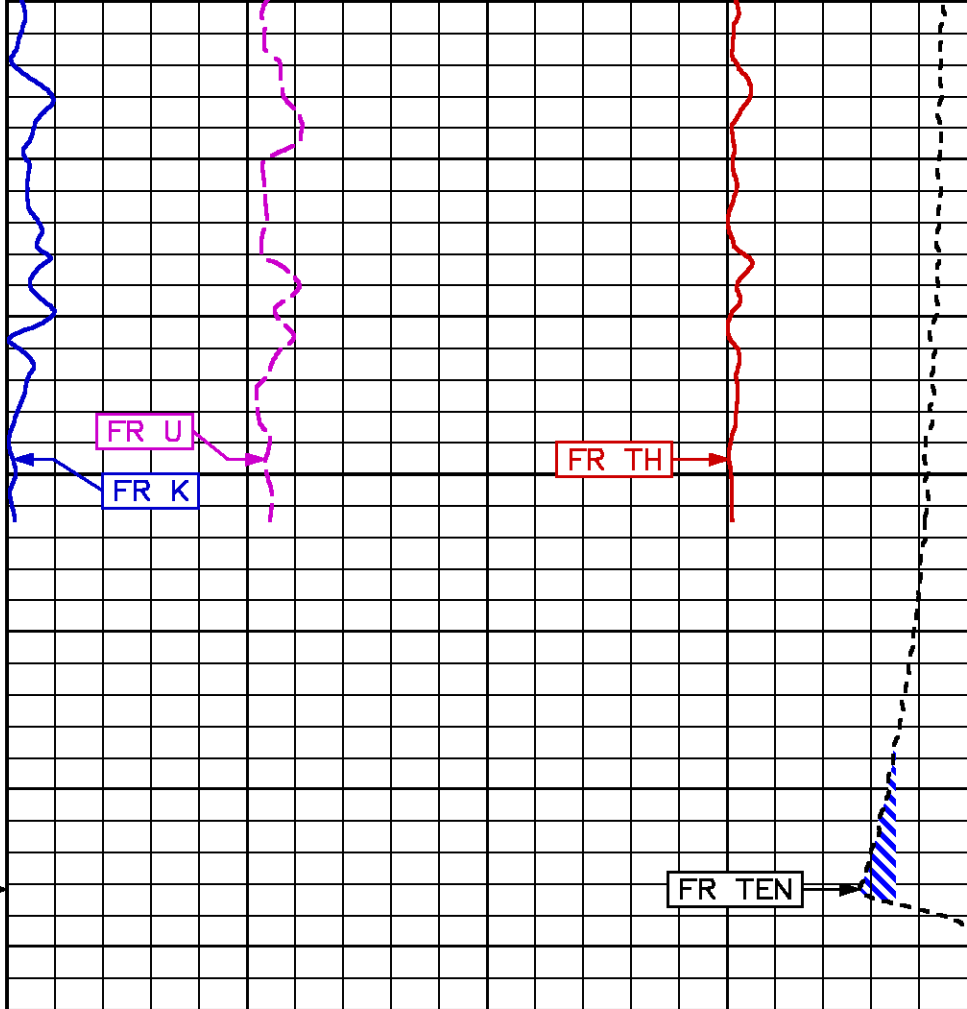




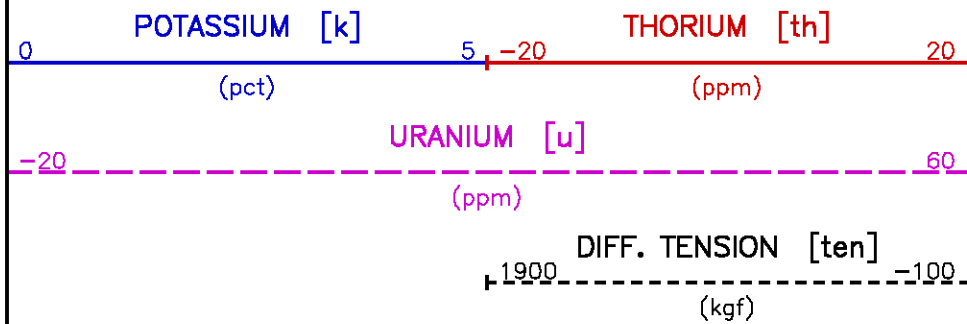
875

TD

METERS



TOOL STICKING



REPEAT LOG

PARAMETER AND FILTER SUMMARY REPORT

FILE: /dat1a/pass/vul_rb2/k740d01.prm
LOGGING MODE: DEPTH DIRECTION: UP
TOP DEPTH: 812.521 m BOTTOM DEPTH: 890.549 m

SYMMETRIC FILTER

MEASUREMENT TYPE	PARAMETER	VALUE	UNITS	INTERVAL (m)	
TENSION	FILTER ()	medium (1)		TOP	BOTTOM
GR	FILTER ()	medium (1)		''	''
SL-II	FILTER	medium (1)		''	''

SLII PROCESSING

MEASUREMENT TYPE	PARAMETER	VALUE	UNITS	INTERVAL (m)	
E MATRIX	OPEN/CASED HOLE	OPEN HOLE		TOP	BOTTOM
SLII AUTO GAIN	AUTO GAIN	AUTO GAIN ON		''	''
SLII ENERGY RANGE	ENERGY RANGE	1.30-3.00 MeV		''	''
SPECTRUM CALIBRATION	MODE	AUTOMATIC		''	''

CURVE DESCRIPTION REPORT

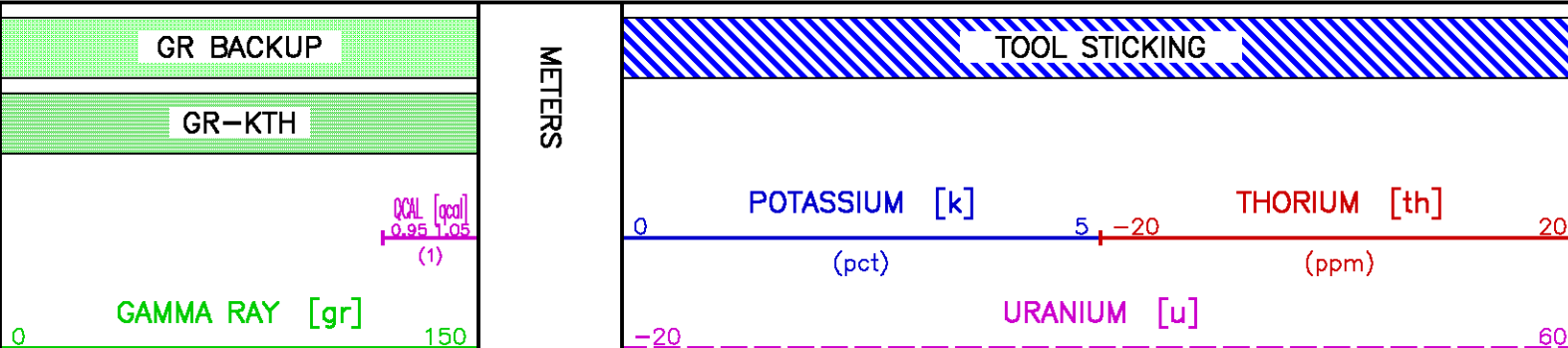
CURVE NAME	CURVE ALIAS	CREATION DATE	CURVE DESCRIPTION
F1:CHT	CHT	Nov 10 06:43:56 2009	CABLE HEAD TENSION
F1:GR	GR	Nov 10 02:46:03 2009	GAMMA RAY
F1:GRSL	GRSL	Nov 10 02:46:03 2009	GAMMA RAY FROM 1329 SPECTRUM
F1:K	K	Nov 10 02:46:03 2009	POTASSIUM CONTENT
F1:KTH	KTH	Nov 10 02:46:03 2009	STRIPPED POTASSIUM-THORIUM
F1:MMRK	MMRK	Nov 10 02:46:03 2009	MINUTE MARK
F1:QCAL	QCAL	Nov 10 02:46:03 2009	QUALITY CURVE
F1:TEN	TEN	Nov 10 02:46:03 2009	DIFFERENTIAL TENSION
F1:TH	TH	Nov 10 02:46:03 2009	THORIUM CONCENTRATION
F1:U	U	Nov 10 02:46:03 2009	URANIUM CONTENT

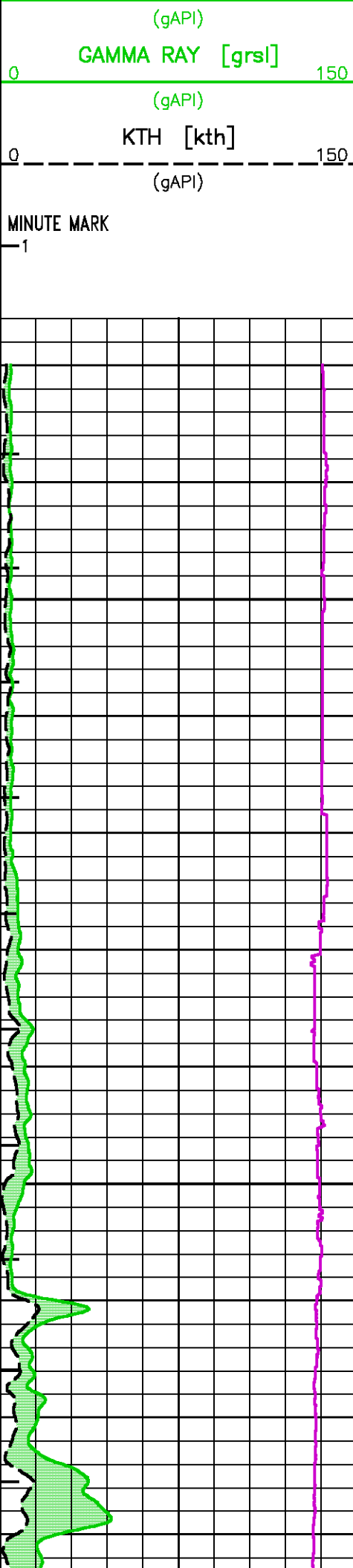
CURVE MEASURE POINT OFFSET

CURVE	OFFSET (m)	CURVE	OFFSET (m)	CURVE	OFFSET (m)	CURVE	OFFSET (m)
CHT	0.00	K	13.64	TEN	0.00		
GR	13.64	KTH	13.64	TH	13.64		
GRSL	13.64	QCAL	13.64	U	13.64		

Presentation : cpu1:/dat1a/pass/vul_rb2/isl_rpt.pdf [1:240 Scale]
Plot Interval : 813.664 - 893.293 Meters

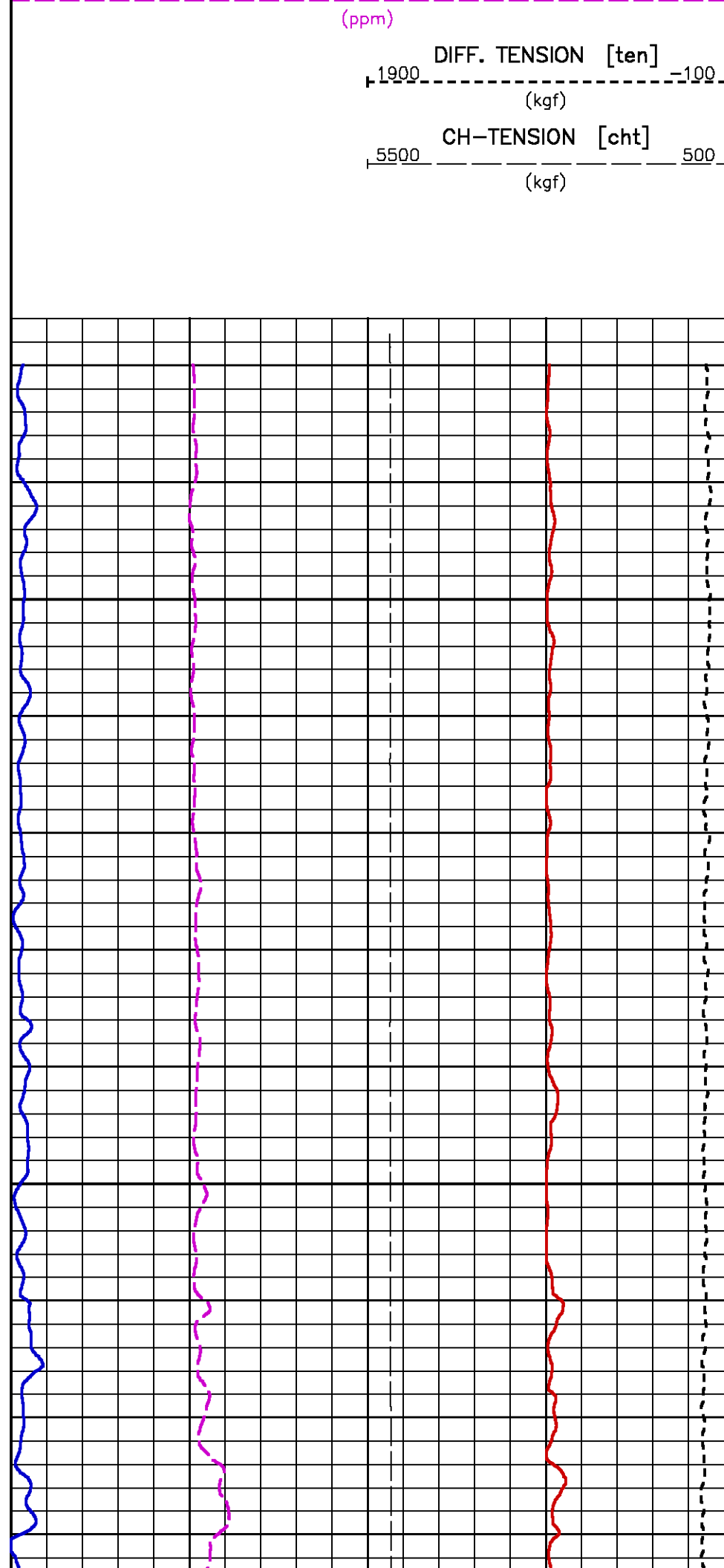
Data File 1 : F1 : cpu1:/dat1a/pass/vul_rb2/311_rpt.xtf
Created On : Nov 10 06:43:56 2009
Company : VULCAN MINERALS
Well : VULCAN INVESTCAN RED BROOK #2
Field : BAY ST. GEORGE BASIN
File Interval : 802.31 - 893.293 Meters
Oct : k740d

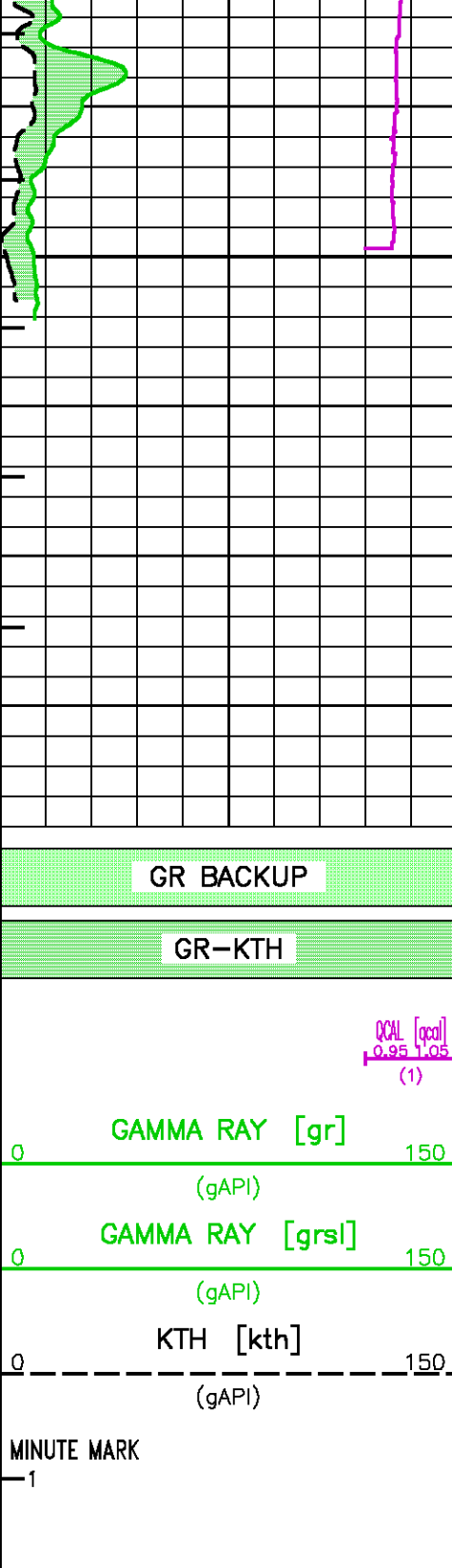




825

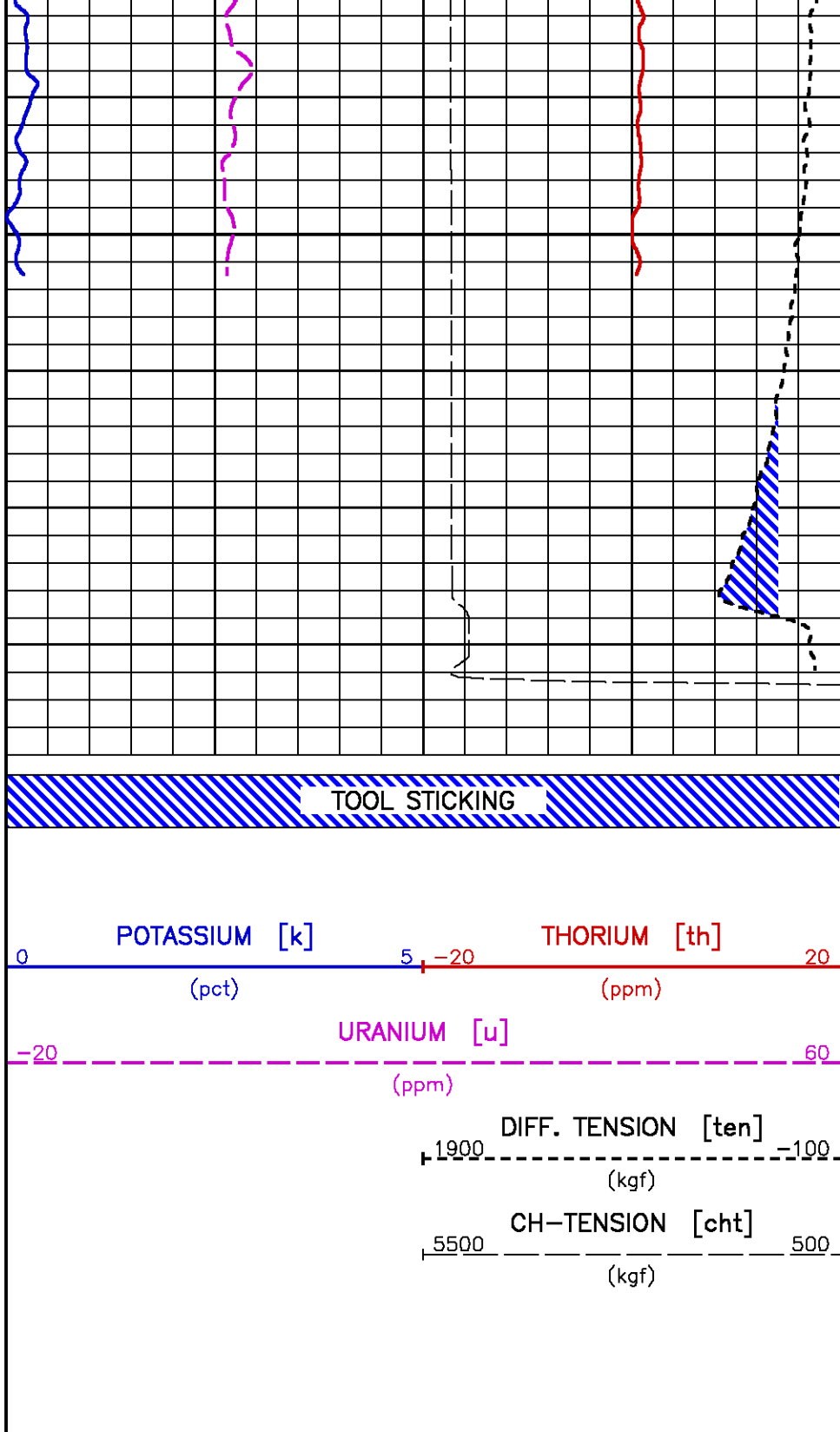
850





875

METERS



CALIBRATION / VERIFICATION SUMMARY

GR PRIMARY CALIBRATION SUMMARY

TOOL #: 1329XA 153116

DATE/TIME PERFORMED: Thu Nov 5 13:51:18 2009

UNIT #: 3885TA HL4126

CALB JIG #: 4702NK WA-724

	BACKGROUND (cts/s)	CALBRTR ON (cts/s)	CR DIFF (cts/s)	MULT	BACKGROUND (gAPI)	CALBRTR ON (gAPI)	CALBRTR (gAPI)
GR	182.89	1033.18	850.3	0.176	32.26	182.26	150
			830.0 960.0				

GR PRIMARY VERIFICATION SUMMARY

TOOL #: 1329XA 153116

DATE/TIME PERFORMED: Thu Nov 5 13:53:49 2009

UNIT #: 3885TA HL4126

VERI JIG #: 4702NK WA-724

	BACKGROUND (cts/s)	CALBRTR ON (cts/s)	MULT	BACKGROUND (gAPI)	CALBRTR ON (gAPI)	DIFF. (gAPI)
GR	179.67	1032.67	0.176	31.70	182.17	150.48
						140.00 160.00

GR BEFORE LOG VERIFICATION SUMMARY

TOOL #: 1329XA 153116

DATE/TIME PERFORMED: Tue Nov 10 02:13:12 2009

DAYS SINCE CAL: 4

UNIT #: 3885TA HL4126

VERI JIG #: 4702NK WA-724

	BACKGROUND (cts/s)	CALBRTR ON (cts/s)	MULT	BACKGROUND (gAPI)	CALBRTR ON (gAPI)	DIFF. (gAPI)
GR	103.78	949.18	0.176	18.31	167.45	149.14
						140.48 160.48

GR AFTER LOG VERIFICATION SUMMARY

TOOL #: 1329XA 153116

DATE/TIME PERFORMED: Tue Nov 10 05:05:28 2009

DAYS SINCE CAL: 4

UNIT #: 3885TA HL4126

VERI JIG #: 4702NK WA-724

	BACKGROUND (cts/s)	CALBRTR ON (cts/s)	MULT	BACKGROUND (gAPI)	CALBRTR ON (gAPI)	DIFF. (gAPI)
GR	106.60	944.82	0.176	18.81	166.68	147.87
						139.14 159.14

SL_II PRIMARY CALIBRATION SUMMARY

TOOL #: 1329XA 153116

DATE/TIME PERFORMED: Thu Nov 5 13:49:20 2009

UNIT #: 3885TA HL4126

CALIBRATOR ID: 4702NA WA-724

UNIT #: 3885TA HL4126

CALIBRATOR ID: 4702NA WA-724

	Bkgnd (cts/s)	Cal ON (cts/s)	Mult (gAPI/(cts/s))	Bkgnd (gAPI)	Cal ON (gAPI)	Cal Value (gAPI)
GR-SL (.06-3.5)	180.99	1029.80	0.177	31.98	181.98	150

	Std Rate (cts/s)	Meas Rate (cts/s)	Tool Norm	Std Mult	Log Mult	App Con (pct ppm)
E (.15-3.0)	748	714.2	1.047 0.900 1.100			
K				0.01169	0.01224	8.700
U				0.02668	0.02794	20.000
TH				0.07158	0.07497	53.500

	Mult chnl/MeV	Add chnls	Chi Sqr qsa	QCAL	GAIN	QPKS
SPECTRUM	71.611	0.753	0.548	0.998 0.980 1.020	3035	5

	P1 .352 MeV	P2 .609 MeV	P3 1.120 MeV	P4 1.765 MeV	P5 2.204 MeV
Std Pk	25.80	44.20	81.00	127.40	159.00
Meas Pk	25.37 22.80 28.80	44.50 40.20 48.20	81.59 76.00 86.00	127.58 121.40 133.40	157.97 152.00 166.00
Fit Pk	25.96	44.36	80.96	127.15	158.58

SL_II PRIMARY VERIFICATION SUMMARY

TOOL #: 1329XA 153116

DATE/TIME PERFORMED: Thu Nov 5 13:54:03 2009

UNIT #: 3885TA HL4126

CALIBRATOR ID: 4702NA WA-724

	Bkgnd (cts/s)	Cal ON (cts/s)	Mult (gAPI/(cts/s))	Bkgnd (gAPI)	Cal ON (gAPI)	Cal Value (gAPI)
GR-SL (.06-3.5)	177.86	1028.96	0.177	31.43	181.83	150 135 165

	Std rate (cts/s)	Meas rate (cts/s)	Tool norm	Std Mult	Log Mult	App Con (pct ppm)
E (.15-3.0)	748	715.4	1.047			
K				0.01169	0.01224	8.759 7.830 9.570
U				0.02668	0.02794	19.991 18.000 22.000
TH				0.07158	0.07497	53.633 48.150 58.850

Mult Add Chi Sqr QCAL GAIN QPKS

	chnl/MeV	chnls	qsa			
SPECTRUM	71.827	0.625	0.631	1.000	3035	5
				0.980 1.020		

	P1	P2	P3	P4	P5
	.352 MeV	.609 MeV	1.120 MeV	1.765 MeV	2.204 MeV
Std Pk	25.80	44.20	81.00	127.40	159.00
Meas Pk	25.24	44.50	82.04	127.32	158.57
	22.80 28.80	40.20 48.20	76.00 86.00	121.40 133.40	152.00 166.00
Fit Pk	25.91	44.37	81.07	127.40	158.93

SL_I BEFORE LOG VERIFICATION SUMMARY

TOOL #: 1329XA 153116 DATE/TIME PERFORMED: Tue Nov 10 02:17:50 2009 DAYS SINCE CAL: 4

UNIT #: 3885TA HL4126 CALIBRATOR ID: 4702NA WA-724

	Bkgnd (cts/s)	Cal ON (cts/s)	Mult (gAPI/(cts/s))	Bkgnd (gAPI)	Cal ON (gAPI)	Cal Value (gAPI)
GR-SL (.06-3.5)	102.81	947.23	0.177	18.17	167.39	149
						135 165

	Std rate (cts/s)	Meas rate (cts/s)	Tool norm	Std Mult	Log Mult	App Con (pct ppm)
E (.15-3.0)	748	720.4	1.047			

K	0.01169	0.01224	8.820
			7.830 9.570
U	0.02668	0.02794	20.130
			18.000 22.000
TH	0.07158	0.07497	54.006
			48.150 58.850

	Mult chnl/MeV	Add chnls	Chi Sqr qsa	QCAL	GAIN	QPKS
SPECTRUM	71.051	0.708	0.548	0.990	3067	5
				0.980 1.020		

	P1	P2	P3	P4	P5
	.352 MeV	.609 MeV	1.120 MeV	1.765 MeV	2.204 MeV
Std Pk	25.80	44.20	81.00	127.40	159.00
Meas Pk	25.16	44.16	80.72	126.72	156.64
	22.80 28.80	40.20 48.20	76.00 86.00	121.40 133.40	152.00 166.00
Fit Pk	25.72	43.98	80.28	126.11	157.30

SL_I AFTER LOG VERIFICATION SUMMARY

TOOL #: 1329XA 153116 DATE/TIME PERFORMED: Tue Nov 10 05:05:56 2009 DAYS SINCE CAL: 4

	Bkgnd (cts/s)	Cal ON (cts/s)	Mult (gAPI/(cts/s))	Bkgnd (gAPI)	Cal ON (gAPI)	Cal Value (gAPI)
GR-SL (.06-3.5)	103.84	940.31	0.177	18.35	166.17	148
						135 165

	Std rate (cts/s)	Meas rate (cts/s)	Tool norm	Std Mult	Log Mult	App Con (pct ppm)
E (.15-3.0)	748	702.4	1.047			

K	0.01169	0.01224	8.599
			7.830 9.570
U	0.02668	0.02794	19.625
			18.000 22.000
TH	0.07158	0.07497	52.653
			48.150 58.850

	Mult chnl/MeV	Add chnls	Chi Sqr qsa	QCAL	GAIN	QPKS
SPECTRUM	72.133	0.896	1.097	1.007	3067	5
				0.980 1.020		

	P1 .352 MeV	P2 .609 MeV	P3 1.120 MeV	P4 1.765 MeV	P5 2.204 MeV
Std Pk	25.80	44.20	81.00	127.40	159.00
Meas Pk	25.60	44.84	82.51	129.01	158.93
	22.80 28.80	40.20 48.20	76.00 86.00	121.40 133.40	152.00 166.00
Fit Pk	26.29	44.83	81.69	128.21	159.88



Baker Atlas



COMPANY
WELL
FIELD
PROVINCE

VULCAN MINERALS INC.
VULCAN INVESTCAN RED BROOK #2
BAY ST.GEORGE BASIN
NEWFOUNDLAND AND LABRADOR

FILE NO:

API NO:

LOCATION:

BH LOC. LSD:

LAT 48.2679591667 LONG -58.7501141667

ELEVATIONS:

KB 61.8 M

DF

GL 55.5 M

UID:

N/A

LICENSE:

ADW 2009-116-03-

DATE

09-NOV-2009